

The Jefferson

LIBERTY PARK

Club Ridge



The Jefferson

5 Bed – 4 Bath
4984 SQFT

The Jefferson's Standard Features

Building Standards:

- Concrete slab basement foundation
- Traditional stick framing methods
- Framed "Green Corners" for higher energy efficiency
- Engineered AdvanTech Sub Floor
- Eco friendly Sentricon Termite Bait Station
- Studs, ceiling joists, and rafters will be 16" on center on the 1st floor & 24" on the 2nd floor

Exterior Features:

- Masonry Brick, Hardie Lap, & Board and Batten exterior siding
- Limited Lifetime Architectural Roof Shingles
- Exposed rafter tails
- Tongue and Groove Porch Ceilings
- Single hung, double paned, high efficiency, Low E glass, vinyl windows
- Wooden front door & locking system
- Other exterior doors will be fiberglass ¾ lite
- 8x8 wooden columns with large corbels on the front porch
- 8x8 wooden columns on the back porch
- \$30,000 landscaping allowance
- 4 car garage (2 car on main level and 2 car on basement level)
- *Optional* finished basement (adds 1685 sqft)

Interior Features:

- Open cell R20 Spray Foam installed on roof deck
- Traditional R13 Batt/Fiberglass Insulation installed in the exterior walls (draft stopping measures to seal Insulation)
- Tankless gas water heater
- 14.3 SEER2 electric heat pump
- Unfinished basement & attic storage on second floor
- Ventless gas log fireplace with brick surround & hearth with a shaker style mantel
- First floor interior doors will be 8'0 hollow core doors, all other interior doors will be 6'8 hollow core doors
- Low Voltage pre-wiring included. Additional smart home packages available on pre-sale homes

Interior Finishes:

Design Features

- 6" Baseboards & 4" cased windows throughout
- Recessed lighting throughout kitchen, living room, dining room & primary bedroom
- Wooden shelving installed in the bedroom closets, laundry room, pantry, and all other closets.
- Interior walls primed & painted with Sherwin Williams® Paint. Includes two wall colors, one trim color & one ceiling color
- Mud bench in the drop zone between the garage and kitchen

Flooring

- Prefinished engineered hardwood first floor common areas, primary bedroom, laundry room, and powder bath
- Ceramic tile in all full bathrooms
- Carpet in all other bedrooms, closets, and any other rooms

Kitchen

- Custom designed wooden cabinets in kitchen & bathrooms
- Quartz countertops throughout
- Stainless Steel appliances by KitchenAid®, including the dishwasher, electric double wall oven, gas cooktop, wood vent hood, & built in microwave
- Delta® Kitchen Fixtures
- Stainless Steel undermount sink in kitchen
- Tile backsplash in kitchen

Bathrooms

- Tile shower with waterproofing system in the primary bathroom
- Freestanding tub in the primary bathroom
- Large double vanity in primary bathroom with under-mount sinks
- Tub/shower with tile surround in bathroom #2
- Fiberglass tub/shower all other full bathrooms
- Oil Rubbed Bronze Delta® Bath Fixtures

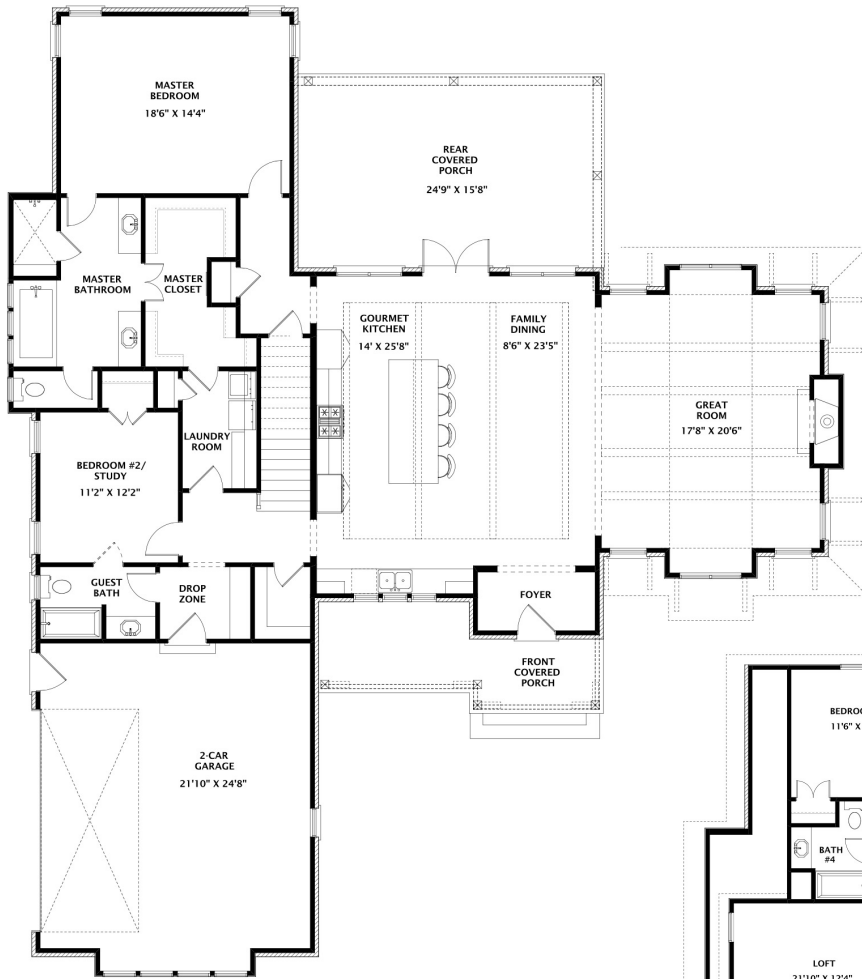
Bedrooms

- All Bedrooms will have ceiling fans

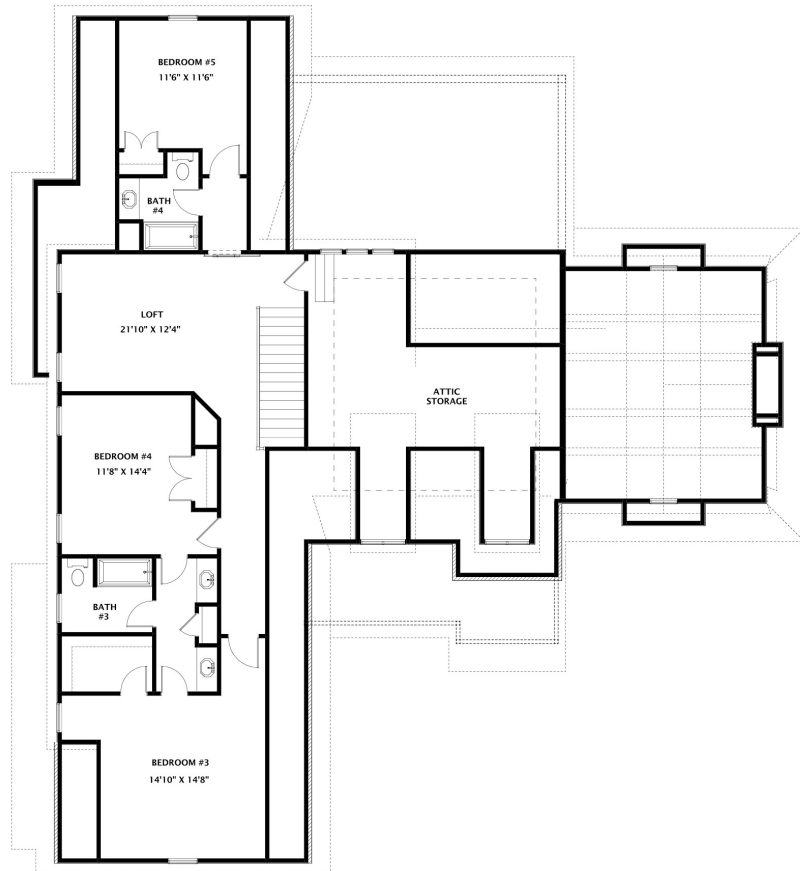
Customizing isn't complicated! Upgraded finish options are available for our standard finishes. We have all of our upgrade options, details, and pricing available for you in our Design Guide. View the link below to access it!

www.hollandhomesllc.com/process/design-guide

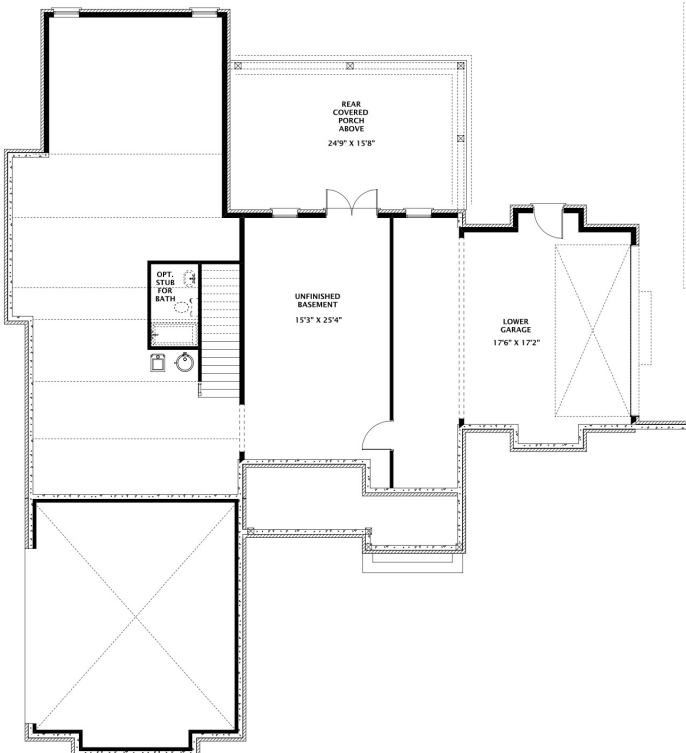
MAIN LEVEL



UPPER LEVEL



** Unfinished Basement
with 2 Car Garage*



First Floor
2,190 sqft.

Second Floor
1,326 sqft.

Basement
1,468 sqft.



"Building Reputations"

www.HollandHomesllc.com

(334) 332-7157

THE ELEVATION AND FLOOR PLANS CONTAINED HEREIN ARE NOT TO SCALE AND ARE GRAPHIC ILLUSTRATIONS FOR MARKETING AND PRESENTATION PURPOSES ONLY. ACTUAL FLOOR PLANS AND ALL MATERIALS MAY VARY PRIOR TO OR DURING CONSTRUCTION. SOME FEATURES SHOWN MAY BE OPTIONAL. HOLLAND HOMES RESERVES THE RIGHT TO SUBSTITUTE MATERIALS AND COMPONENTS OF SIMILAR QUALITY, AND TO CHANGE FEATURES, OPTIONS, AND ARCHITECTURAL DETAILS WITHOUT PRIOR NOTICE. ACCORDINGLY, NEITHER THESE MATERIALS, NOR ANY COMMUNICATION MADE OR GIVEN IN CONNECTION WITH THESE MATERIALS, MAY BE DEEMED TO CONSTITUTE ANY REPRESENTATION OF WARRANTY, CONTRACT OR GUARANTEE OR MAY OTHERWISE BE RELIED UPON BY ANY PERSON OR ENTITY UNLESS CONVEYED IN WRITTEN FORM. THIS MARKETING INFORMATION AND PLAN ARE PROPERTY OF HOLLAND HOMES.