

# *The Kayden*

LIBERTY PARK

Club Ridge



*The Kayden*

7 Bed – 6 Bath

5809 SQFT

# The Kayden's Standard Features

## Building Standards:

- Concrete slab basement foundation
- Traditional stick framing methods
- Framed "Green Corners" for higher energy efficiency
- Engineered AdvanTech Sub Floor
- Eco friendly Sentricon Termite Bait Station
- Studs, ceiling joists & rafters will be 16" on center on the 1<sup>st</sup> floor & 24" on the 2<sup>nd</sup> floor

## Exterior Features:

- Masonry Brick, Hardie Lap & Board and Batten exterior siding
- Limited Lifetime Architectural Roof Shingles
- Exposed rafter tails
- Tongue and Groove Porch Ceilings
- Single hung, double paned, high efficiency, low E glass, vinyl windows
- Wooden front door & locking system
- Other exterior doors will be fiberglass ¾ lite
- 8x8 rough sawn Cypress columns with large corbels on all porches
- \$30,000 landscaping allowance
- 4 car garage (2 car on main level and 2 car on basement level)

## Interior Features:

- Open cell R20 Spray Foam installed on roof deck
- Traditional R13 Batt/Fiberglass Insulation installed in the exterior walls (draft stopping measures to seal Insulation)
- Tankless gas water heater
- 14.3 SEER2 electric heat pump
- Ventless gas log fireplace with 5' tall brick surround & hearth and a shaker style mantel
- Low Voltage pre-wiring included. Additional smart home packages available on pre-sale homes

## Interior Finishes:

### Design Features

- 6" Baseboards & 4" cased windows throughout
- All interior doors will be 8'0 hollow core doors

- Recessed lighting throughout kitchen, living room, dining room & primary bedroom
- Wire shelving installed in the primary closets, library nook, pantry, all other closets & laundry area
- Interior walls primed & painted with Sherwin Williams® Paint. Includes two wall colors, one trim color & one ceiling color
- Mud bench with judges paneling in the hallways between the garage & kitchen

### Flooring

- Prefinished engineered hardwood in basement common area, first floor common areas, primary bedroom and closets, and first floor guest bedrooms and closet
- Ceramic tile in all full bathrooms
- Carpet in basement, second floor bedrooms, second floor closets & second floor common areas

### Kitchen

- Custom designed wooden cabinets in kitchen & bathrooms with under cabinet lighting in the kitchen
- Quartz countertops throughout
- Stainless Steel appliances by KitchenAid®, including the dishwasher, electric double wall oven, gas cooktop, wood vent hood & built in microwave
- Delta® Kitchen Fixtures
- Stainless Steel undermount sink in kitchen
- Tile backsplash in kitchen

### Bathrooms

- Tile shower with waterproofing system in the primary bathroom, guest bathroom, and bathroom connected to bedroom #6
- Freestanding tub in the primary bathroom
- Fiberglass tub/shower in all other full bathrooms
- Oil Rubbed Bronze Delta® Bath Fixtures
- Large double vanity in primary bathroom with under-mount sinks
- Vanity mirrors

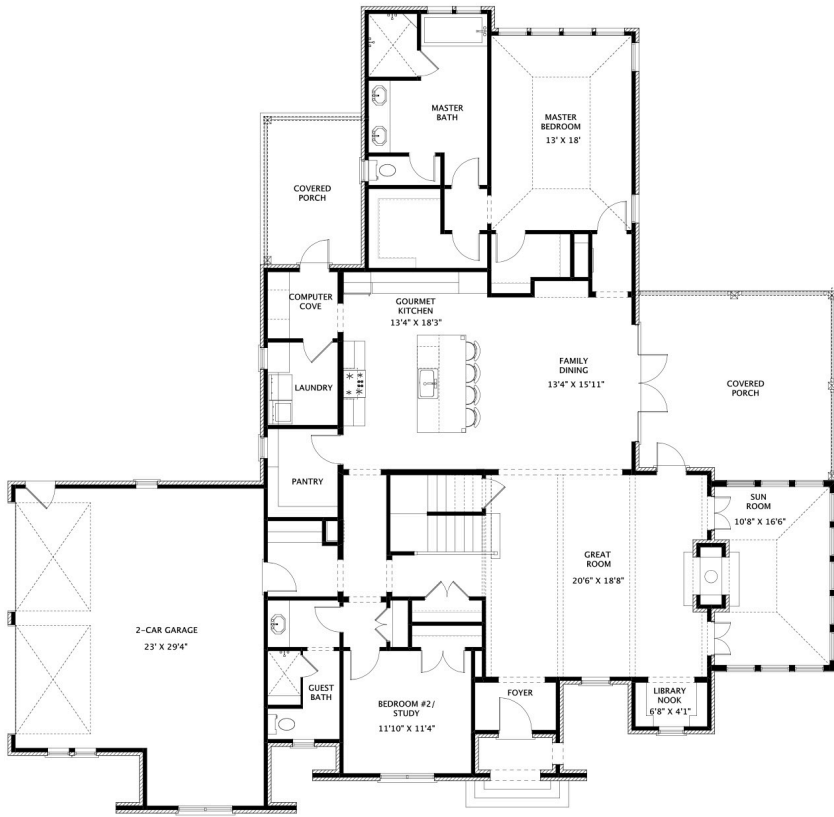
### Bedrooms

- All Bedrooms will have ceiling fans

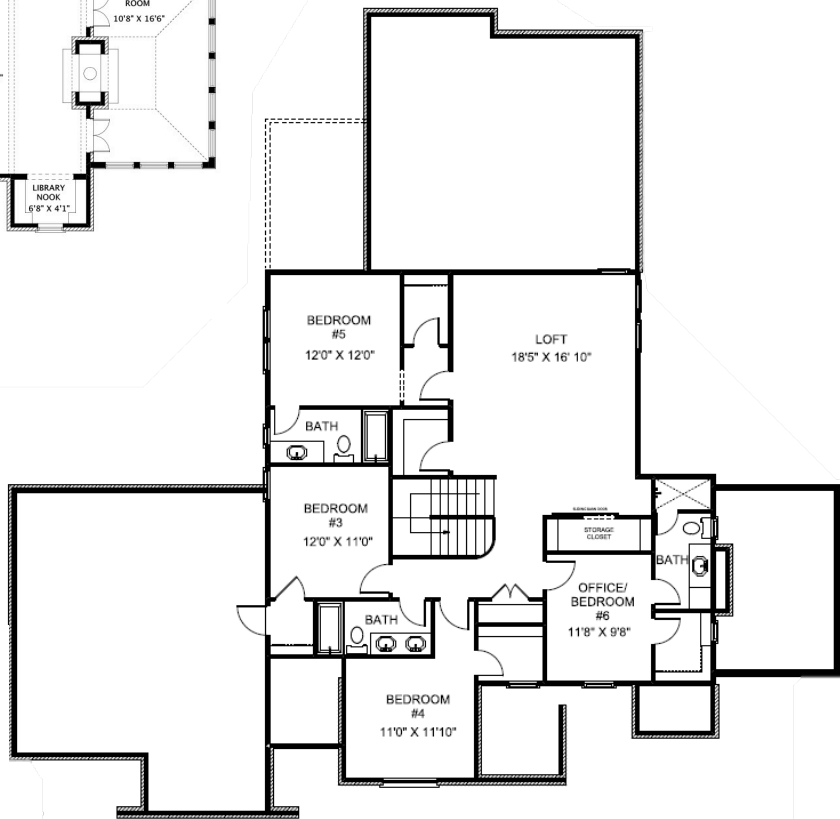
Customizing isn't complicated! Upgraded finish options are available for our standard finishes. We have all of our upgrade options, details, and pricing available for you in our Design Guide. View the link below to access it!

[www.hollandhomesllc.com/process/design-guide](http://www.hollandhomesllc.com/process/design-guide)

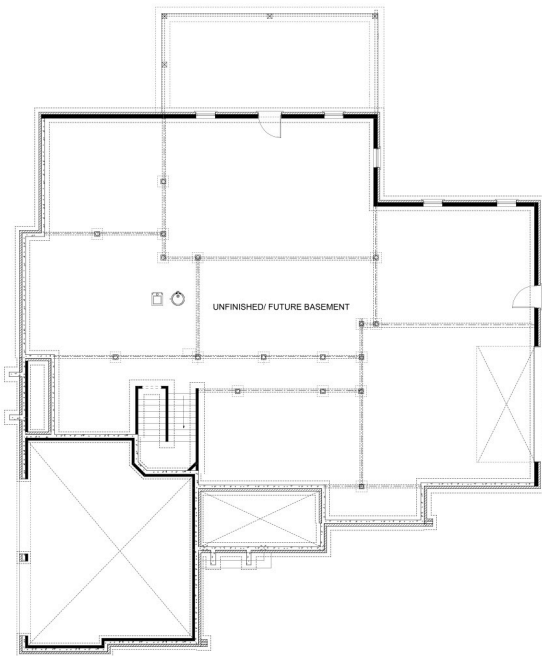
# MAIN LEVEL



# UPPER LEVEL



# BASEMENT





# Holland Homes

"Building Reputations"

[www.HollandHomesllc.com](http://www.HollandHomesllc.com)

**(334) 332-7157**

THE ELEVATION AND FLOOR PLANS CONTAINED HEREIN ARE NOT TO SCALE AND ARE GRAPHIC ILLUSTRATIONS FOR MARKETING AND PRESENTATION PURPOSES ONLY. ACTUAL FLOOR PLANS AND ALL MATERIALS MAY VARY PRIOR TO OR DURING CONSTRUCTION. SOME FEATURES SHOWN MAY BE OPTIONAL. HOLLAND HOMES RESERVES THE RIGHT TO SUBSTITUTE MATERIALS AND COMPONENTS OF SIMILAR QUALITY, AND TO CHANGE FEATURES, OPTIONS, AND ARCHITECTURAL DETAILS WITHOUT PRIOR NOTICE. ACCORDINGLY, NEITHER THESE MATERIALS, NOR ANY COMMUNICATION MADE OR GIVEN IN CONNECTION WITH THESE MATERIALS, MAY BE DEEMED TO CONSTITUTE ANY REPRESENTATION OF WARRANTY, CONTRACT OR GUARANTEE OR MAY OTHERWISE BE RELIED UPON BY ANY PERSON OR ENTITY UNLESS CONVEYED IN WRITTEN FORM. THIS MARKETING INFORMATION AND PLAN ARE PROPERTY OF HOLLAND HOMES.