

# *The Toby A*

THE COVE AT SHILOH CREEK



*The Toby A*

3 Bed – 2 Bath  
1391 SQFT

# The Toby A's Standard Features

## Building Standards:

- Slab on grade concrete foundation
- Traditional stick framing methods
- Framed "Green Corners" for higher energy efficiency
- Engineered AdvanTech Sub Floor
- Eco friendly Sentricon Termite Bait Station
- Studs, ceiling joists and rafters will be 16" on center

## Exterior Features:

- Board and Batten exterior siding
- Limited Lifetime Architectural Roof Shingles
- Exposed rafter tails
- Single hung, double paned, high efficiency, low E glass, vinyl windows
- Fiberglass front door & locking system
- 1 Car Garage
- Landscaping to include a plant package and 7 pallets of sod
- Optional fence prices: \$6,750 for interior homesites, \$8,000 for exterior homesites
- Optional covered back porch upgrade: \$7,500

## Interior Features:

- 9' smooth ceilings throughout
- Blow-in batt insulation installed on roof deck
- Traditional R13 Batt/Fiberglass insulation installed in the exterior walls (draft stopping measures to seal insulation)
- 50-gallon electric water heater
- 14.3 SEER2 electric heat pump
- Low Voltage pre-wiring included. Additional smart home packages available on pre-sale homes
- Optional Fireplace: \$6,500

## Interior Finishes:

### Design Features

- Baseboards and cased windows throughout
- Disc lighting throughout kitchen, living room, dining room & primary bedroom
- Wire shelving installed in all closets, pantry & laundry areas
- Interior walls primed & painted with Sherwin Williams® Paint. Includes two wall colors, one trim color & one ceiling color

### Flooring

- Standard LVP flooring in the common areas, bathrooms and laundry room
- Carpet in all bedrooms, closets & any other rooms

### Kitchen

- Shaker style, custom designed, wooden cabinets in the kitchen & bathrooms
- Granite countertops throughout
- Stainless Steel appliances by Whirlpool®, including the dishwasher, glass top electric range & microwave
- Chrome Delta® Kitchen Fixtures
- Stainless Steel undermount sink in the kitchen

### Bathrooms

- Large single vanity in the primary bathroom with under-mount sink
- Option to upgrade to double vanity: \$2,500
- High quality fiberglass tub/shower in all full bathrooms
- Chrome Delta® Bath Fixtures

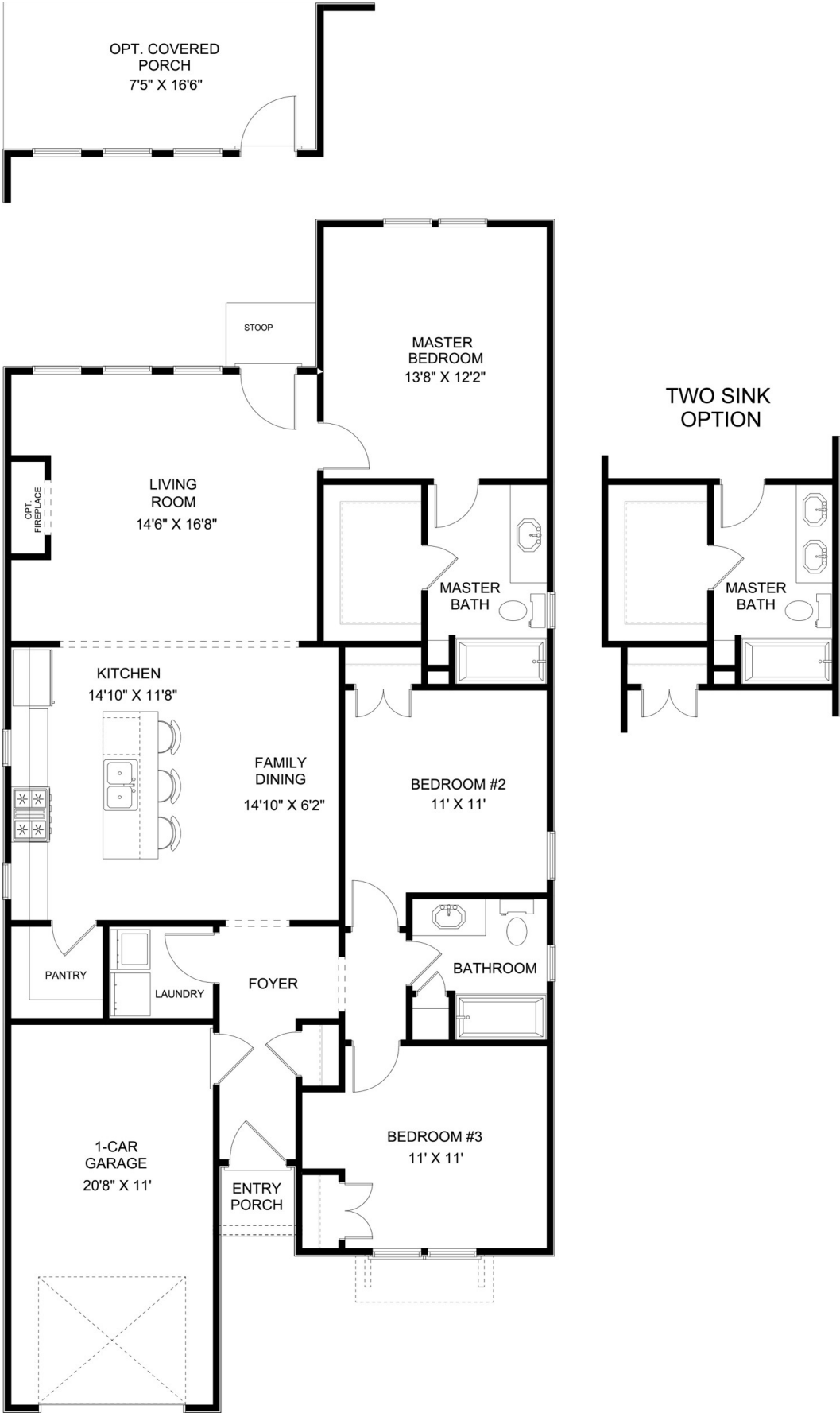
### Bedrooms

- All bedrooms will have disc lighting

The exterior color schemes for the community have been thoughtfully selected by our Design Team. Scan the QR code to see the designated floor plan and color scheme for each lot.



MAIN LEVEL





# THE COVE

AT SHILOH CREEK



"Building Reputations"

[www.HollandHomesllc.com](http://www.HollandHomesllc.com)

**(334) 332-7157**

THE ELEVATION AND FLOOR PLANS CONTAINED HEREIN ARE NOT TO SCALE AND ARE GRAPHIC ILLUSTRATIONS FOR MARKETING AND PRESENTATION PURPOSES ONLY. ACTUAL FLOOR PLANS AND ALL MATERIALS MAY VARY PRIOR TO OR DURING CONSTRUCTION. SOME FEATURES SHOWN MAY BE OPTIONAL. HOLLAND HOMES RESERVES THE RIGHT TO SUBSTITUTE MATERIALS AND COMPONENTS OF SIMILAR QUALITY, AND TO CHANGE FEATURES, OPTIONS, AND ARCHITECTURAL DETAILS WITHOUT PRIOR NOTICE. ACCORDINGLY, NEITHER THESE MATERIALS, NOR ANY COMMUNICATION MADE OR GIVEN IN CONNECTION WITH THESE MATERIALS, MAY BE DEEMED TO CONSTITUTE ANY REPRESENTATION OF WARRANTY, CONTRACT OR GUARANTEE OR MAY OTHERWISE BE RELIED UPON BY ANY PERSON OR ENTITY UNLESS CONVEYED IN WRITTEN FORM. THIS MARKETING INFORMATION AND PLAN ARE PROPERTY OF HOLLAND HOMES.