

The Trace

FIREFLY



The Trace

3 Bed – 2 Bath

1,414 SQFT

The Trace's Standard Features

Building Standards:

- Slab on grade concrete foundation
- Traditional stick framing methods
- Framed "Green Corners" for higher energy efficiency
- Engineered AdvanTech Sub Floor
- Eco friendly Sentricon Termite Bait Station
- Studs, ceiling joists, and rafters will be 16" on center

Exterior Features:

- Hardie Lap exterior siding
- Limited Lifetime Architectural Roof Shingles
- Exposed rafter tails
- Single hung, double paned, high efficiency, low E glass, vinyl windows
- Fiberglass front door & locking system
- 6x6 Smooth Pine columns on all porches
- Landscaping to include plant package, irrigation, and 7 pallets of sod
- 1 Car Garage

Interior Features:

- 9' smooth ceilings throughout
- Open cell R20 Spray Foam insulation installed on roof deck
- Traditional R13 Batt/Fiberglass insulation installed in the exterior walls (draft stopping measures to seal insulation)
- 50-gallon electric water heater
- 14.3 SEER2 electric heat pump
- Low Voltage prewiring included. Additional smart home packages are available for pre-sale homes

Interior Finishes:

Design Features

- 6" baseboards & cased windows throughout
- Recessed can lighting throughout kitchen, living room, dining room & primary bedroom
- Wire shelving installed in all closets, pantry & laundry areas
- Interior walls primed & painted with Sherwin Williams® Paint. Includes two wall colors, one trim color & one ceiling color

Flooring

- Standard LVP flooring in the common areas and laundry room
- Ceramic tile in all full bathrooms
- Carpet in all bedrooms, closets, & any other rooms

Kitchen

- Shaker style, custom designed, wooden cabinets in kitchen & bathrooms
- Granite countertops throughout
- Stainless Steel appliances by Whirlpool®, including the dishwasher, glass top electric range & microwave
- Chrome Delta® Kitchen Fixtures
- Stainless Steel undermount sink in kitchen
- Tiled backsplash in kitchen

Bathrooms

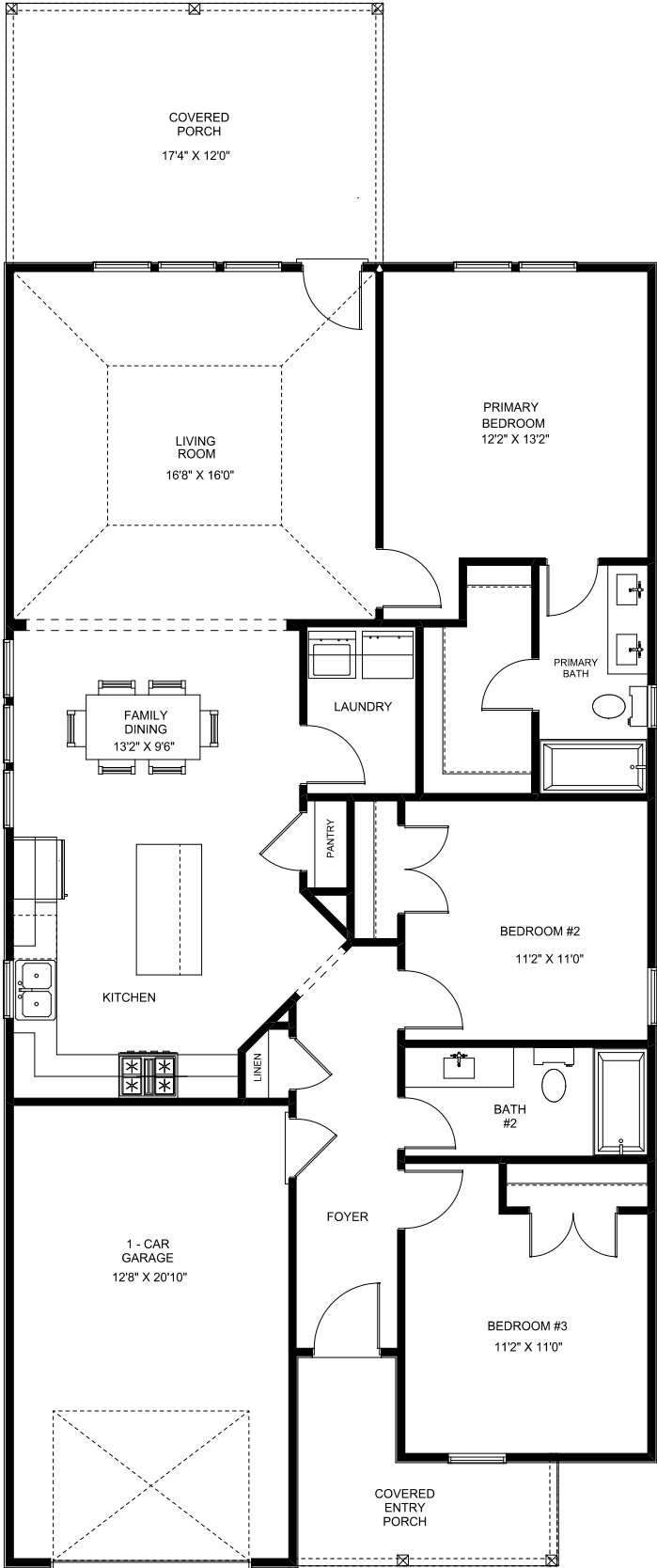
- Large double vanity in primary bathroom with under-mount sinks
- Vanity mirrors
- High quality fiberglass tub/shower in all full bathrooms
- Chrome Delta® Bath Fixtures

Bedrooms

- All Bedrooms will have ceiling fans

The exterior color schemes for the community have been thoughtfully selected by our Design Team. Scan the QR code to see the designated floor plan and color scheme for each lot.

MAIN LEVEL





FIREFLY



**Holland
Homes**

"Building Reputations"

www.HollandHomesllc.com

(334) 332-7157

THE ELEVATION AND FLOOR PLANS CONTAINED HEREIN ARE NOT TO SCALE AND ARE GRAPHIC ILLUSTRATIONS FOR MARKETING AND PRESENTATION PURPOSES ONLY. ACTUAL FLOOR PLANS AND ALL MATERIALS MAY VARY PRIOR TO OR DURING CONSTRUCTION. SOME FEATURES SHOWN MAY BE OPTIONAL. HOLLAND HOMES RESERVES THE RIGHT TO SUBSTITUTE MATERIALS AND COMPONENTS OF SIMILAR QUALITY, AND TO CHANGE FEATURES, OPTIONS, AND ARCHITECTURAL DETAILS WITHOUT PRIOR NOTICE. ACCORDINGLY, NEITHER THESE MATERIALS, NOR ANY COMMUNICATION MADE OR GIVEN IN CONNECTION WITH THESE MATERIALS, MAY BE DEEMED TO CONSTITUTE ANY REPRESENTATION OF WARRANTY, CONTRACT OR GUARANTEE OR MAY OTHERWISE BE RELIED UPON BY ANY PERSON OR ENTITY UNLESS CONVEYED IN WRITTEN FORM. THIS MARKETING INFORMATION AND PLAN ARE PROPERTY OF HOLLAND HOMES.