

The Julia B

THE PRESERVE



The Julia B

3 Bed – 2 1/2 Bath

2,308 SQFT

The Julia B's Standard Features

Building Standards:

- Slab on grade concrete foundation
- Traditional stick framing methods
- Framed "Green Corners" for higher energy efficiency
- Engineered AdvanTech Sub Floor
- Eco-friendly Sentricon Termite Bait Station
- Studs, ceiling joists & rafters will be 16" on center on the 1st floor & 24" on the 2nd floor

Exterior Features:

- Board and Batten and Hardie Lap exterior siding with Masonry Brick
- Exposed rafter tails
- Double hung, double paned, low E glass wood clad windows
- Fiberglass front door & locking system
- Other exterior doors will be steel full lite
- 8x8 smooth columns on all porches
- Landscaping package to include plant package, irrigation, and 7 pallets of sod

Interior Features:

- 10' Smooth Ceiling on Main Level. 9' Smooth Ceiling on Upper Level
- Open cell R20 Spray Foam installed on roof deck
- Traditional R13 Batt/Fiberglass Insulation installed in the exterior walls (draft stopping measures to seal Insulation)
- 50-gallon gas water heater
- Gas Furnace HVAC System
- Option to upgrade to gas fireplace with 5' tall brick surround & hearth and a shaker style mantel: \$6500
- Low Voltage pre-wiring included. Additional smart home packages available

Interior Finishes:

Design Features

- 6" Baseboards & 4" cased windows throughout
- Canned lighting throughout kitchen, living room, dining room & primary bedroom
- Wire shelving installed in the primary closets, pantry, all other closets & laundry area
- Interior walls primed & painted with Sherwin Williams® Paint. Includes two wall colors, one trim color & one ceiling color

Flooring

- Prefinished engineered hardwood in first floor common areas, laundry room, primary bedroom and powder baths
- Ceramic tile in all full bathrooms
- Standard carpet in guest bedrooms, closets & any other rooms

Kitchen

- Custom designed wooden cabinets in kitchen & bathrooms
- Quartz countertops throughout
- Stainless Steel appliances by Whirlpool®, including the dishwasher, oven, gas cooktop, & built-in tabletop microwave
- Wood hood vent
- Brushed Nickel or Oil-Rubbed Bronze Delta® Kitchen Fixtures
- Stainless Steel undermount sink in kitchen
- Tile backsplash in kitchen

Bathrooms

- Tile shower with waterproofing system in the primary bathroom
- Fiberglass tub/shower in all other full bathrooms
- Brushed Nickel, Oil-Rubbed Bronze, or Black Delta® Bath Fixtures
- Large double vanity in primary bathroom with under-mount sinks
- Vanity mirrors

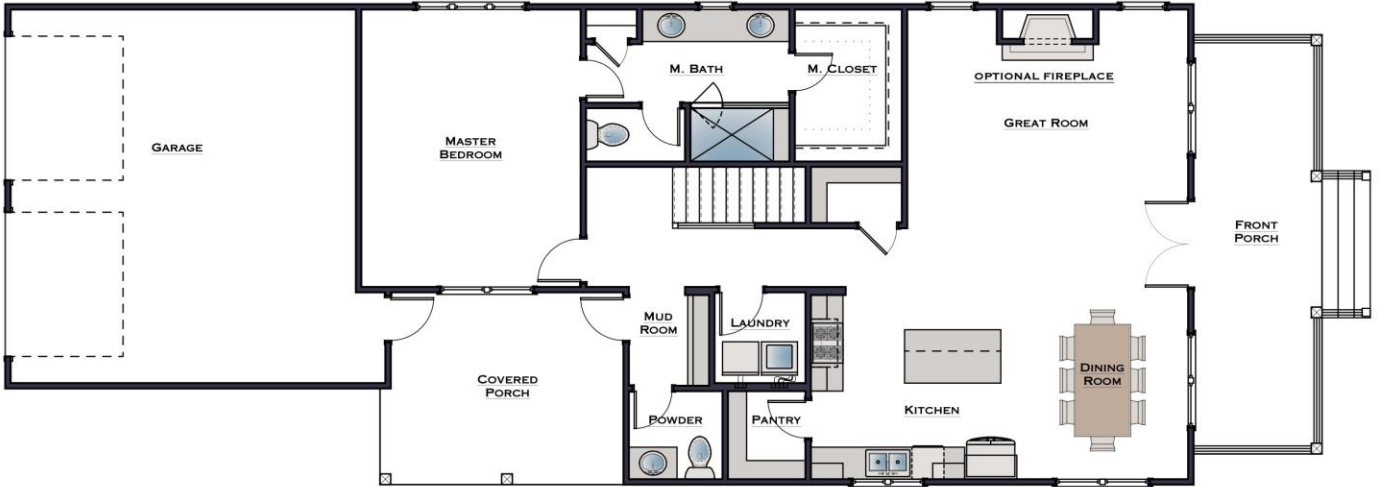
Bedrooms

- All Bedrooms will have ceiling fans

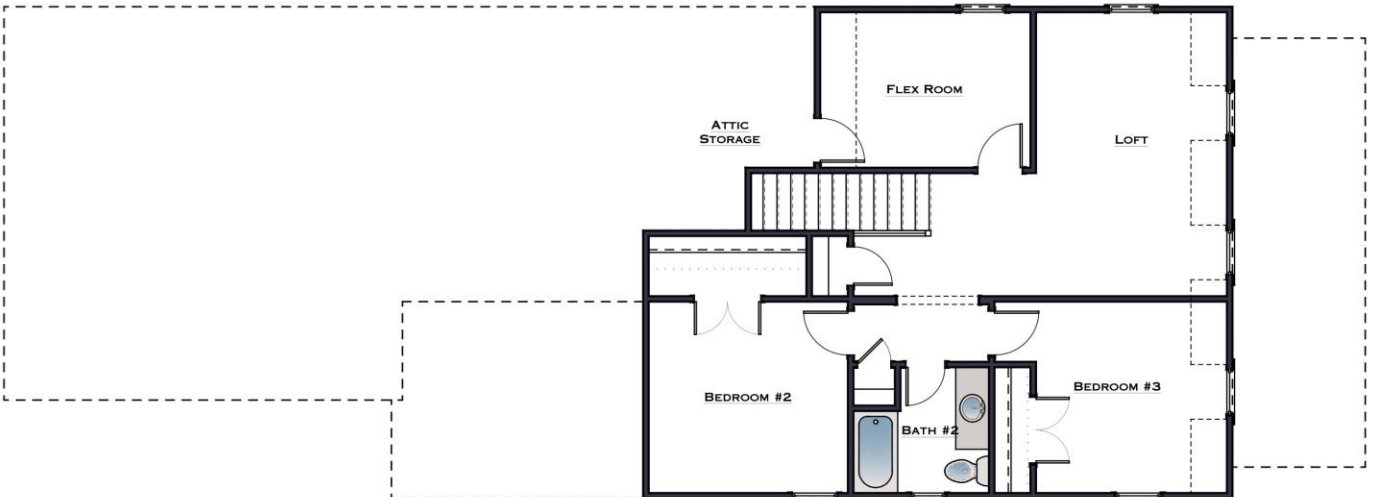
The exterior color schemes for the community have been thoughtfully selected by our Design Team. Scan the QR code to see the designated floor plan and color scheme for each lot.



MAIN LEVEL



UPPER LEVEL



THE PRESERVE




**Holland
Homes**

"Building Reputations"

www.HollandHomesllc.com

(334) 332-7157

THE ELEVATION AND FLOOR PLANS CONTAINED HEREIN ARE NOT TO SCALE AND ARE GRAPHIC ILLUSTRATIONS FOR MARKETING AND PRESENTATION PURPOSES ONLY. ACTUAL FLOOR PLANS AND ALL MATERIALS MAY VARY PRIOR TO OR DURING CONSTRUCTION. SOME FEATURES SHOWN MAY BE OPTIONAL. HOLLAND HOMES RESERVES THE RIGHT TO SUBSTITUTE MATERIALS AND COMPONENTS OF SIMILAR QUALITY, AND TO CHANGE FEATURES, OPTIONS, AND ARCHITECTURAL DETAILS WITHOUT PRIOR NOTICE. ACCORDINGLY, NEITHER THESE MATERIALS, NOR ANY COMMUNICATION MADE OR GIVEN IN CONNECTION WITH THESE MATERIALS, MAY BE DEEMED TO CONSTITUTE ANY REPRESENTATION OF WARRANTY, CONTRACT OR GUARANTEE OR MAY OTHERWISE BE RELIED UPON BY ANY PERSON OR ENTITY UNLESS CONVEYED IN WRITTEN FORM. THIS MARKETING INFORMATION AND PLAN ARE PROPERTY OF HOLLAND HOMES.