

The Rosemary

The Cottages at Laguna



The Rosemary

5 Bed – 4.5 Bath

2233 SQFT

The Rosemary's Standard Features

Building Standards:

- Slab on grade concrete foundation
- Traditional stick framing methods
- Framed "Green Corners" for higher energy efficiency
- Engineered AdvanTech Sub Floor
- Eco friendly Sentricon Termite Bait Station
- Studs, ceiling joists, and rafters will be 16" on center on main level and 24" center on upper level

Exterior Features:

- Hardie Lap exterior siding
- Limited Lifetime Architectural Roof Shingles & Metal Roofing
- Exposed Rafter Tails
- Single hung, double paned, high efficiency, low E glass, impact resistant, vinyl windows
- Fiberglass front door & Locking System
- 6x6 wooden columns on front porch and side patio
- 1x6 pine shutters with 1x4 accents
- One car garage
- \$10,000 landscaping allowance

Interior Features:

- 10' Smooth ceilings throughout
- Open cell R20 Spray Foam insulation installed on roof deck
- Traditional R13 Batt/Fiberglass Insulation installed in the exterior walls
- Draft stopping measures to seal insulation
- 50 Gallon gas water heater
- 14.3 SEER2 electric heat pump
- Foundation SmartHome Package that includes a Smart Home control panel and a video doorbell

Interior Finishes:

Design Features

- 6" Baseboards & cased windows throughout
- Recessed lighting throughout kitchen, living room, dining room & primary bedroom
- Wire shelving installed in all closets; pantry & laundry areas
- Interior walls primed & painted with Sherwin Williams® Paint.
- Mud Bench in the foyer

Flooring

- Standard LVP flooring in all common areas
- Ceramic tile in all full bathrooms

Kitchen

- Shaker style, custom designed, wooden cabinets in kitchen & bathrooms
- Quartz countertops throughout
- Stainless Steel appliances by Whirlpool®, including the dishwasher, free standing electric range & tabletop microwave and wood hood vent
- Delta® Kitchen Fixtures
- Stainless Steel undermount sink in kitchen
- Tiled backsplash in kitchen

Bathrooms

- Double vanity in primary bathrooms with undermount sinks
- Vanity Mirrors
- Delta® Bath Fixtures
- Walk-in tile shower with waterproofing system in the primary bathrooms
- Fiberglass tub/shower in all other full bathrooms

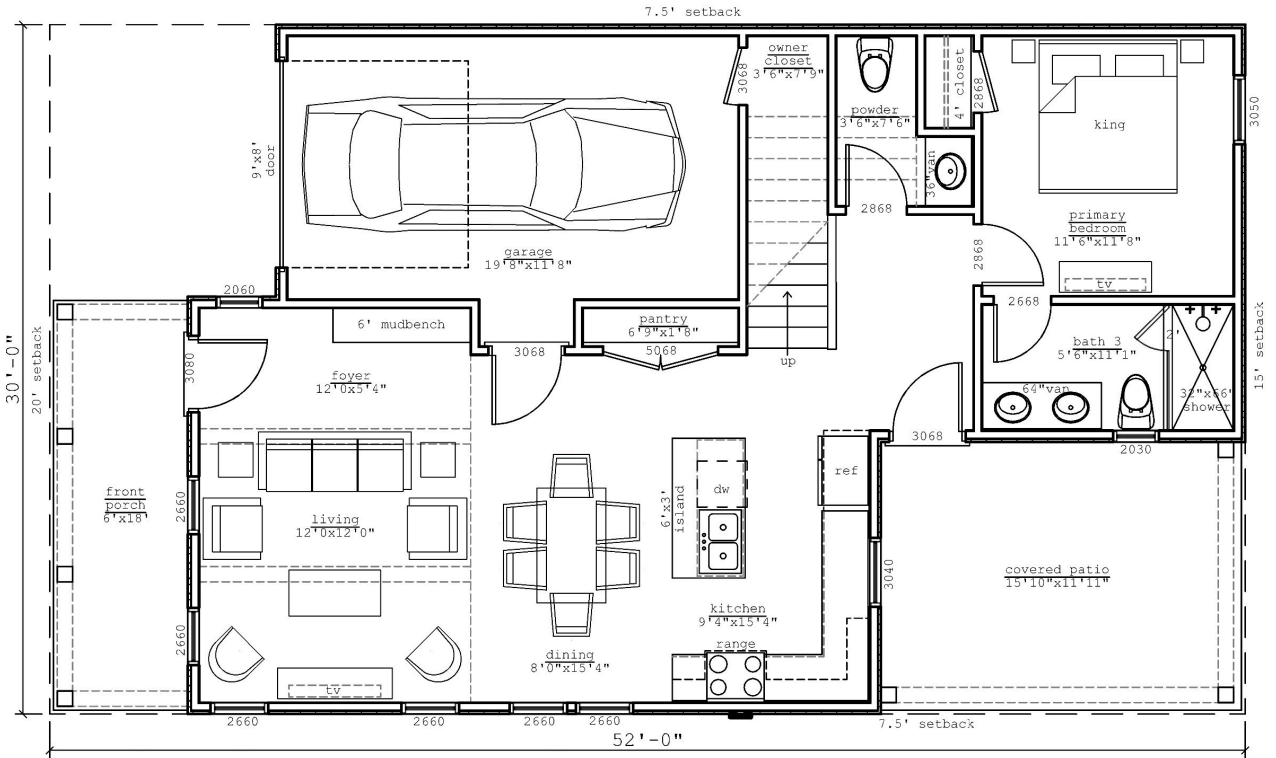
Bedrooms

- All bedrooms will have ceiling fans

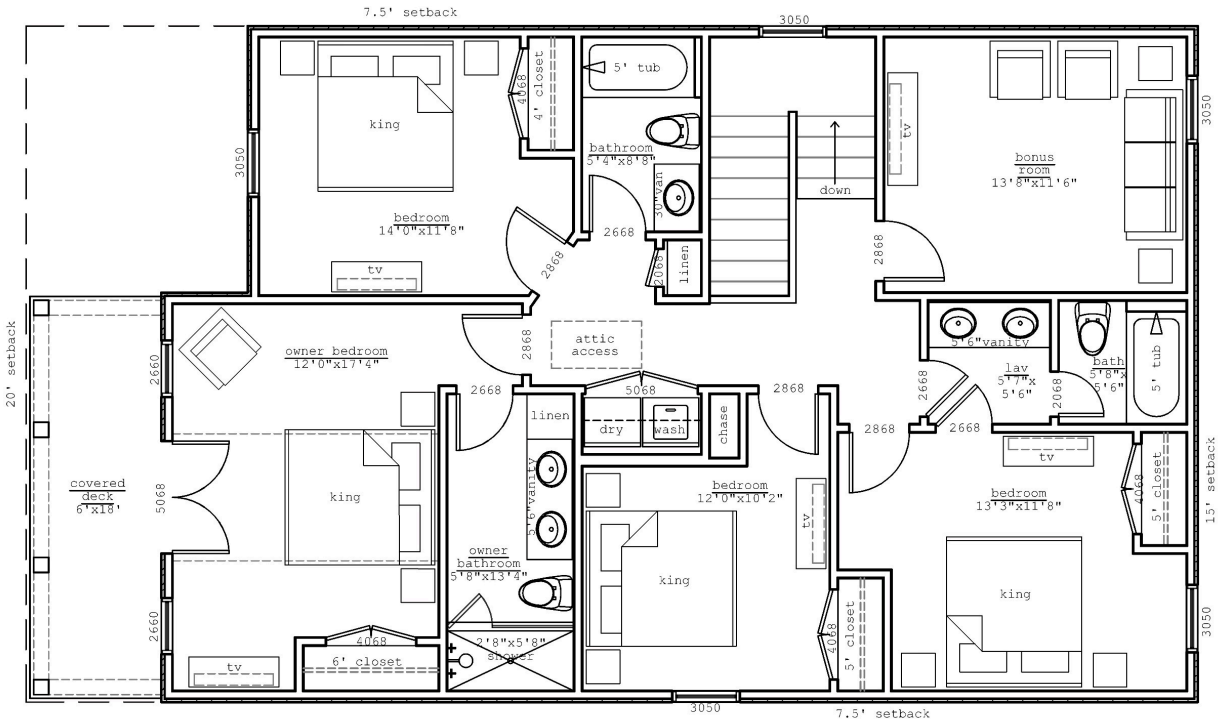
The Holland Homes Interior Design Team has thoughtfully selected each luxury design upgrade that is implemented throughout the home. View the link below to access all design elements chosen for the homes.

www.hollandhomesllc.com/process/design-guide

MAIN LEVEL



UPPER LEVEL



THE COTTAGES AT LAGUNA



"Building Reputations"

www.HollandHomesllc.com

(334) 332-7157



THE ELEVATION AND FLOOR PLANS CONTAINED HEREIN ARE NOT TO SCALE AND ARE GRAPHIC ILLUSTRATIONS FOR MARKETING AND PRESENTATION PURPOSES ONLY. ACTUAL FLOOR PLANS AND ALL MATERIALS MAY VARY PRIOR TO OR DURING CONSTRUCTION. SOME FEATURES SHOWN MAY BE OPTIONAL. HOLLAND HOMES RESERVES THE RIGHT TO SUBSTITUTE MATERIALS AND COMPONENTS OF SIMILAR QUALITY, AND TO CHANGE FEATURES, OPTIONS, AND ARCHITECTURAL DETAILS WITHOUT PRIOR NOTICE. ACCORDINGLY, NEITHER THESE MATERIALS, NOR ANY COMMUNICATION MADE OR GIVEN IN CONNECTION WITH THESE MATERIALS, MAY BE DEEMED TO CONSTITUTE ANY REPRESENTATION OF WARRANTY, CONTRACT OR GUARANTEE OR MAY OTHERWISE BE RELIED UPON BY ANY PERSON OR ENTITY UNLESS CONVEYED IN WRITTEN FORM. THIS MARKETING INFORMATION AND PLAN ARE PROPERTY OF HOLLAND HOMES.