

The Remington

Stonewood Farms



The Remington, optional 2 car garage

4 Bed – 2.5 Bath

2847 SQFT

The Remington's Standard Features

Building Standards:

- Slab on grade concrete foundation
- Traditional stick framing methods
- Framed "Green Corners" for higher energy
- Efficiency engineered AdvanTech Sub Floor
- Eco friendly Sentricon Termite Bait Station
- Studs, ceiling joists, and rafters will be 16" on center on main level and 24" on second level

Exterior Features:

- Hardie lap & Board and Batten exterior siding
- 30 Year Dimensional Architectural Roof Shingles
- Metal roof
- Exposed rafter tails
- Single hung, double paned, high efficiency, Low E glass, vinyl windows
- Fiberglass front door & locking system
- Landscaping Allowance
- 8x8 smooth pine columns on front porch
- 1x6 Cypress shutters with 1x4 raised Cypress accents
- 2 Car garage
- OPTIONAL 3 Car Garage : \$12,000

Interior Features:

- 10' smooth ceilings throughout the first floor & 9' ceilings throughout the second floor
- Open cell R20 Spray Foam installed on roof deck
- Traditional R13 Batt/Fiberglass insulation in all exterior walls of heated space (draft stopping measures to seal insulation)
- 50-gallon electric water heater
- 14-SEER electric heat pump
- Wood burning fireplace with brick surround and hearth and a shaker style mantel
- Foundation SmartHome Package that includes one SmartHome control panel, one video doorbell, 36 months of free SmartHome automation, and a welcome visit from Chorus SmartSecure after closing.

Interior Finishes:

Design Features

- 6" Baseboards & cased windows throughout
- Recessed lighting throughout kitchen, living room, dining room & primary bedroom
- Wire shelving installed in all closets, pantry & laundry areas
- Interior walls primed & painted with Sherwin Williams® Paint. Includes two wall colors, one trim color & one ceiling color
- Mud Bench in mud room

Flooring

- Standard LVP flooring will be installed in all first floor common areas, powder bathroom, & laundry room.
- Ceramic tile in all full bathrooms
- Carpet in all other bedrooms, closets, upstairs common areas & any other rooms

Kitchen

- Shaker style, custom designed, wooden cabinets in kitchen & bathrooms
- Granite countertops throughout
- Tiled Backsplash in Kitchen
- Stainless Steel Appliances by Whirlpool®, including the dishwasher, electric freestanding range & over the range microwave
- Chrome Delta® Kitchen Fixtures
- Stainless Steel undermount sink in kitchen

Bathrooms

- Large double vanity in primary bathroom with under-mount sinks
- Chrome Delta® Bath Fixtures
- Vanity mirrors
- High quality fiberglass tub/shower in all full bathrooms

Bedrooms

- All Bedrooms will have ceiling fans

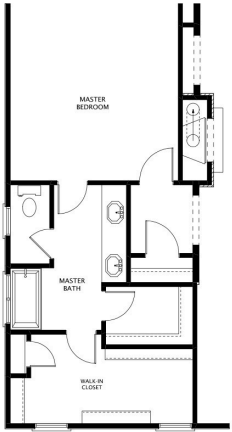
Customizing isn't complicated! Upgraded finish options are available for our standard finishes in pre-sale homes. We have all of our upgrade options, details, and pricing available for you in our Design Guide. View the link below to access it!

www.hollandhomesllc.com/process/design-guide

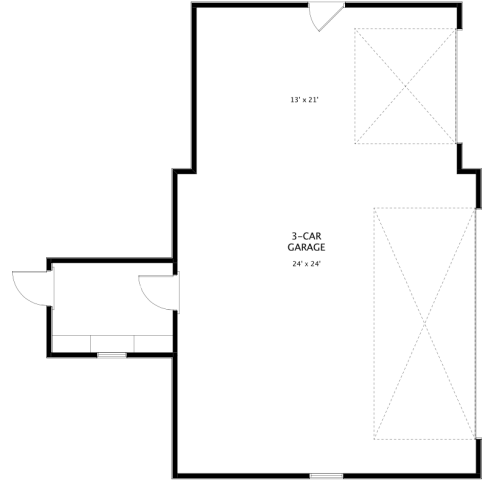
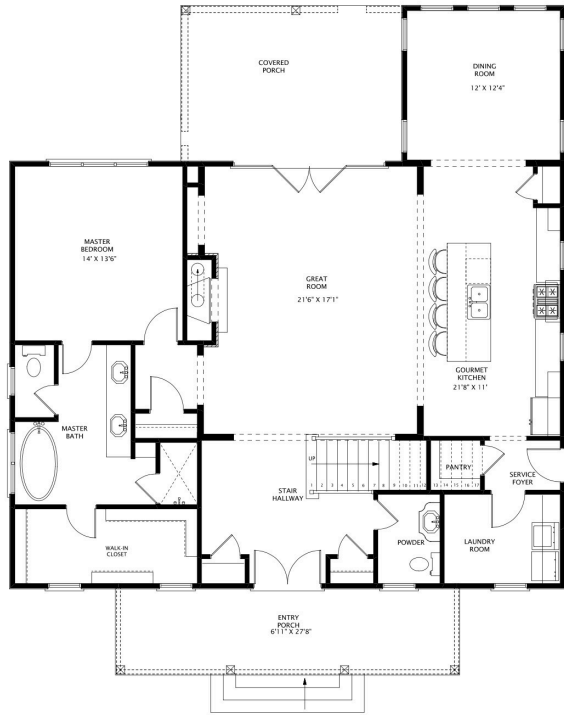
MAIN LEVEL

Primary Bathroom Options

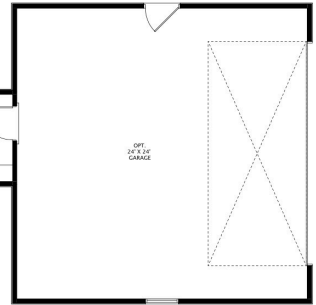
Tub/Shower
is Standard



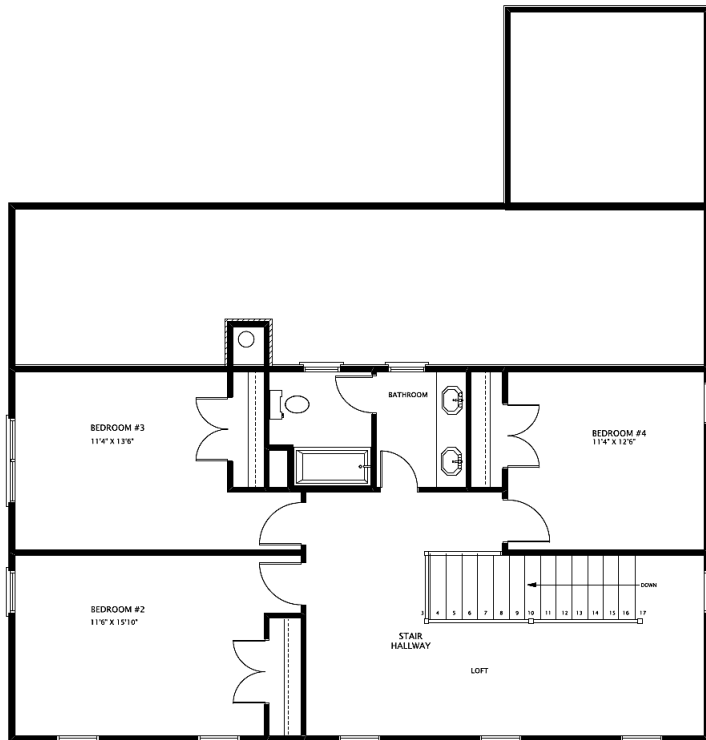
ALT BATH OPTION
W/ TUB/SOWER COMBO



OPTION for 3 Car Garage



UPPER LEVEL





"Building Reputations"

www.HollandHomesllc.com

(334) 332-7157

THE ELEVATION AND FLOOR PLANS CONTAINED HEREIN ARE NOT TO SCALE AND ARE GRAPHIC ILLUSTRATIONS FOR MARKETING AND PRESENTATION PURPOSES ONLY. ACTUAL FLOOR PLANS AND ALL MATERIALS MAY VARY PRIOR TO OR DURING CONSTRUCTION. SOME FEATURES SHOWN MAY BE OPTIONAL. HOLLAND HOMES RESERVES THE RIGHT TO SUBSTITUTE MATERIALS AND COMPONENTS OF SIMILAR QUALITY, AND TO CHANGE FEATURES, OPTIONS, AND ARCHITECTURAL DETAILS WITHOUT PRIOR NOTICE. ACCORDINGLY, NEITHER THESE MATERIALS, NOR ANY COMMUNICATION MADE OR GIVEN IN CONNECTION WITH THESE MATERIALS, MAY BE DEEMED TO CONSTITUTE ANY REPRESENTATION OF WARRANTY, CONTRACT OR GUARANTEE OR MAY OTHERWISE BE RELIED UPON BY ANY PERSON OR ENTITY UNLESS CONVEYED IN WRITTEN FORM. THIS MARKETING INFORMATION AND PLAN ARE PROPERTY OF HOLLAND HOMES.