

The Daisy

Hunters Hill



The Daisy

6 Bed – 4 Bath

2,901 SQFT

The Daisy's Standard Features

Building Standards:

- Slab on grade concrete foundation
- Traditional stick framing methods
- Framed "Green Corners" for higher energy efficiency
- Engineered AdvanTech Sub Floor
- Eco friendly Sentricon Termite Bait Station
- Studs, ceiling joists and rafters will be 16" on center on the first floor & 24" on center of second floor

Exterior Features:

- Hardie Lap & Board and Batten exterior siding with Masonry Brick front water table
- Limited Lifetime Architectural Roof Shingles
- Metal roof
- Exposed rafter tails
- Single hung, double paned, Low E glass, vinyl windows
- Fiberglass front door & locking system
- 8x8 smooth pine columns with large corbels on the front porch
- 1x6 Cypress shutters with 1x4 raised accents
- \$30,000 landscaping budget. Landscape plan to be determined by builder to match community standards
- 2 car garage

Interior Features:

- 10' smooth ceilings throughout main floor & 9' ceilings throughout second floor
- Open cell R20 Spray Foam insulation installed on roof deck
- Traditional R13 Batt/Fiberglass insulation installed in the exterior walls (draft stopping measures to seal insulation)
- 50-gallon electric water heater
- 14.3 SEER2 all electric heat pump
- Wood burning fireplace with 5' tall brick surround & hearth with a shaker style mantel
- Foundation SmartHome Package that includes one SmartHome control panel, one video doorbell, 36 months of free SmartHome automation and a welcome visit from Chorus SmartSecure after closing

Interior Finishes:

Design Features

- 6" Baseboards & cased windows throughout
- Recessed lighting throughout kitchen, living room, dining room & primary bedroom
- Wire shelving installed in all closets, pantry & laundry areas
- Interior walls primed & painted with Sherwin Williams® Paint. Includes two wall colors, one trim color & one ceiling color
- Mud Bench in drop zone

Flooring

- Pre-finished engineered hardwood flooring in the first-floor common areas & laundry room
- Ceramic tile in all full bathrooms
- Carpet in all bedrooms, closets & any other rooms

Kitchen

- Shaker style, custom designed, wooden cabinets in kitchen & bathrooms
- Granite countertops throughout
- Stainless Steel Appliances by Whirlpool®, including the dishwasher, wood vent hood, electric freestanding range & built-in microwave
- Oil Rubbed Bronze Delta® Kitchen Fixtures
- Stainless Steel undermount sink in kitchen
- Tiled backsplash in kitchen

Bathrooms

- Walk-in tile shower with waterproofing system in the primary bathroom
- Large double vanities in the primary bathroom with under-mount sinks
- Oil Rubbed Bronze Delta® Bath Fixtures
- Vanity mirrors
- Steel tub/shower with a tile surround in bathroom 2
- High quality fiberglass tub/shower in all other bathrooms

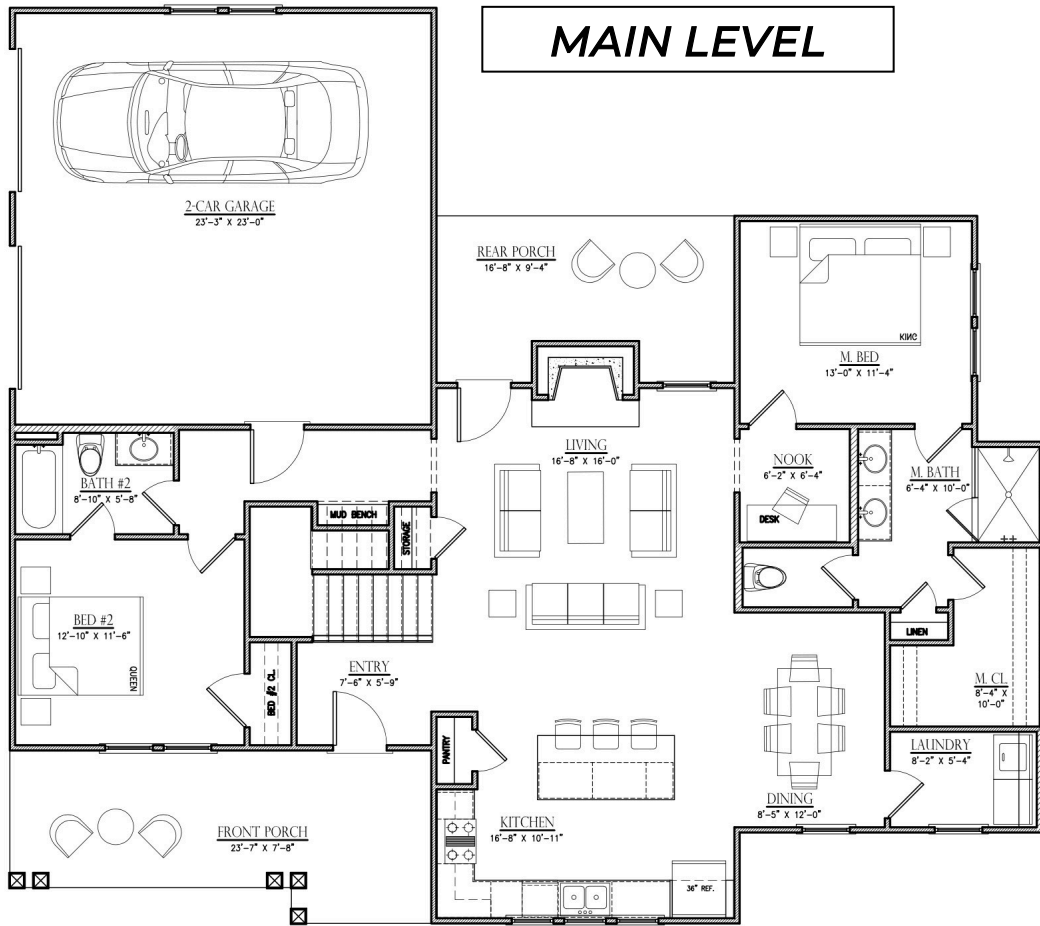
Bedrooms

- All bedrooms will have ceiling fans

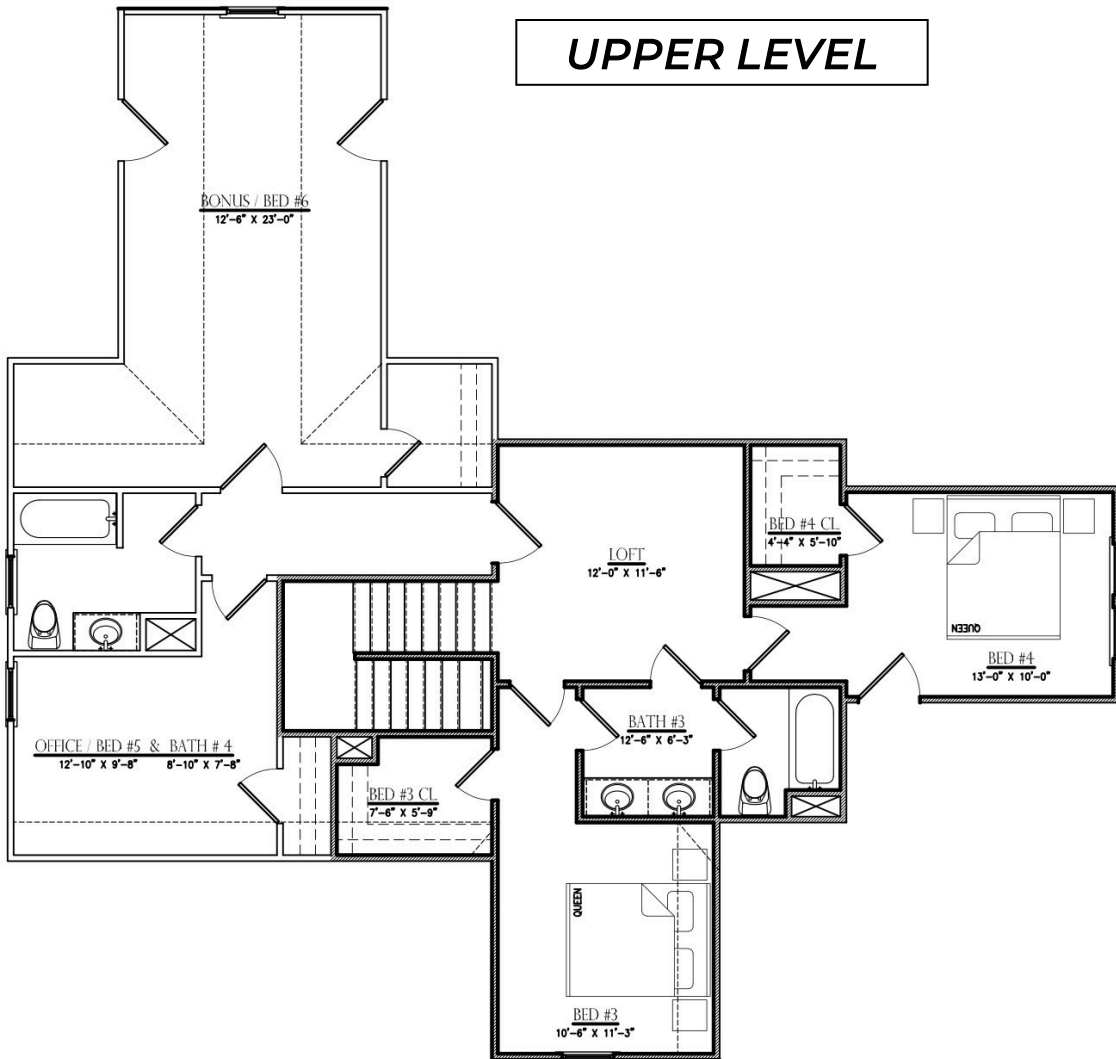
Customizing isn't complicated! Upgraded finish options are available for our standard finishes in pre-sale homes. We have all of our upgrade options, details, and pricing available for you in our Design Guide. View the link below to access it!

www.hollandhomesllc.com/process/design-guide

MAIN LEVEL



UPPER LEVEL





Hunters Hill



"Building Reputations"

www.HollandHomesllc.com

(334) 332-7157

THE ELEVATION AND FLOOR PLANS CONTAINED HEREIN ARE NOT TO SCALE AND ARE GRAPHIC ILLUSTRATIONS FOR MARKETING AND PRESENTATION PURPOSES ONLY. ACTUAL FLOOR PLANS AND ALL MATERIALS MAY VARY PRIOR TO OR DURING CONSTRUCTION. SOME FEATURES SHOWN MAY BE OPTIONAL. HOLLAND HOMES RESERVES THE RIGHT TO SUBSTITUTE MATERIALS AND COMPONENTS OF SIMILAR QUALITY, AND TO CHANGE FEATURES, OPTIONS, AND ARCHITECTURAL DETAILS WITHOUT PRIOR NOTICE. ACCORDINGLY, NEITHER THESE MATERIALS, NOR ANY COMMUNICATION MADE OR GIVEN IN CONNECTION WITH THESE MATERIALS, MAY BE DEEMED TO CONSTITUTE ANY REPRESENTATION OF WARRANTY, CONTRACT OR GUARANTEE OR MAY OTHERWISE BE RELIED UPON BY ANY PERSON OR ENTITY UNLESS CONVEYED IN WRITTEN FORM. THIS MARKETING INFORMATION AND PLAN ARE PROPERTY OF HOLLAND HOMES.