

The Taby C

Butterfly Rock
at The Haven



The Taby C
3 Bed – 2 Bath
1391 SQFT

The Toby C's Standard Features

Building Standards:

- Slab on grade concrete foundation
- Traditional stick framing methods
- Framed "Green Corners" for higher energy efficiency
- Engineered AdvanTech Sub Floor
- Eco friendly Sentricon Termite Bait Station
- Studs, ceiling joists and rafters will be 16" on center

Exterior Features:

- Hardie Lap & Board and Batten exterior siding
- 30 Year Dimensional Architectural Roof Shingles
- Exposed rafter tails
- Single hung, double paned, high efficiency, low E glass, vinyl windows
- Fiberglass front door & locking system
- Landscaping to include plant package, irrigation and 10 pallets of sod
- 6x6 smooth pine columns on the back porch
- 1 Car Garage

Interior Features:

- 9' smooth ceilings throughout
- Open cell R20 Spray Foam insulation installed on roof deck
- Traditional R13 Batt/Fiberglass insulation installed in the exterior walls (draft stopping measures to seal insulation)
- 50-gallon electric water heater
- 14 SEER electric heat pump
- Foundation SmartHome Package that includes one SmartHome control panel, one video doorbell, 36 months of free SmartHome automation and a welcome visit from Chorus SmartSecure after closing

Interior Finishes:

Design Features

- 6" baseboards & cased windows throughout
- Recessed lighting throughout kitchen, living room, dining room & primary bedroom
- Wire shelving installed in all closets, pantry & laundry areas
- Interior walls primed & painted with Sherwin Williams® Paint. Includes two wall colors, one trim color & one ceiling color

Flooring

- LVP flooring in the common areas & laundry room
- Ceramic tile in all full bathrooms
- Carpet in all bedrooms, closets & any other rooms

Kitchen

- Shaker style, custom designed, wooden cabinets in kitchen & bathrooms
- Granite countertops throughout
- Stainless Steel appliances by Whirlpool®, including the dishwasher, glass top electric range & microwave
- Chrome Delta® Kitchen Fixtures
- Stainless Steel undermount sink in kitchen
- Tiled backsplash in kitchen
- Floating shelves

Bathrooms

- Large single vanity in the primary bathroom with under-mount sink
- Option to upgrade to double vanity in the primary bathroom: \$1,000
- Chrome Delta® Bath Fixtures
- Vanity mirrors
- High quality fiberglass tub/shower in all full bathrooms

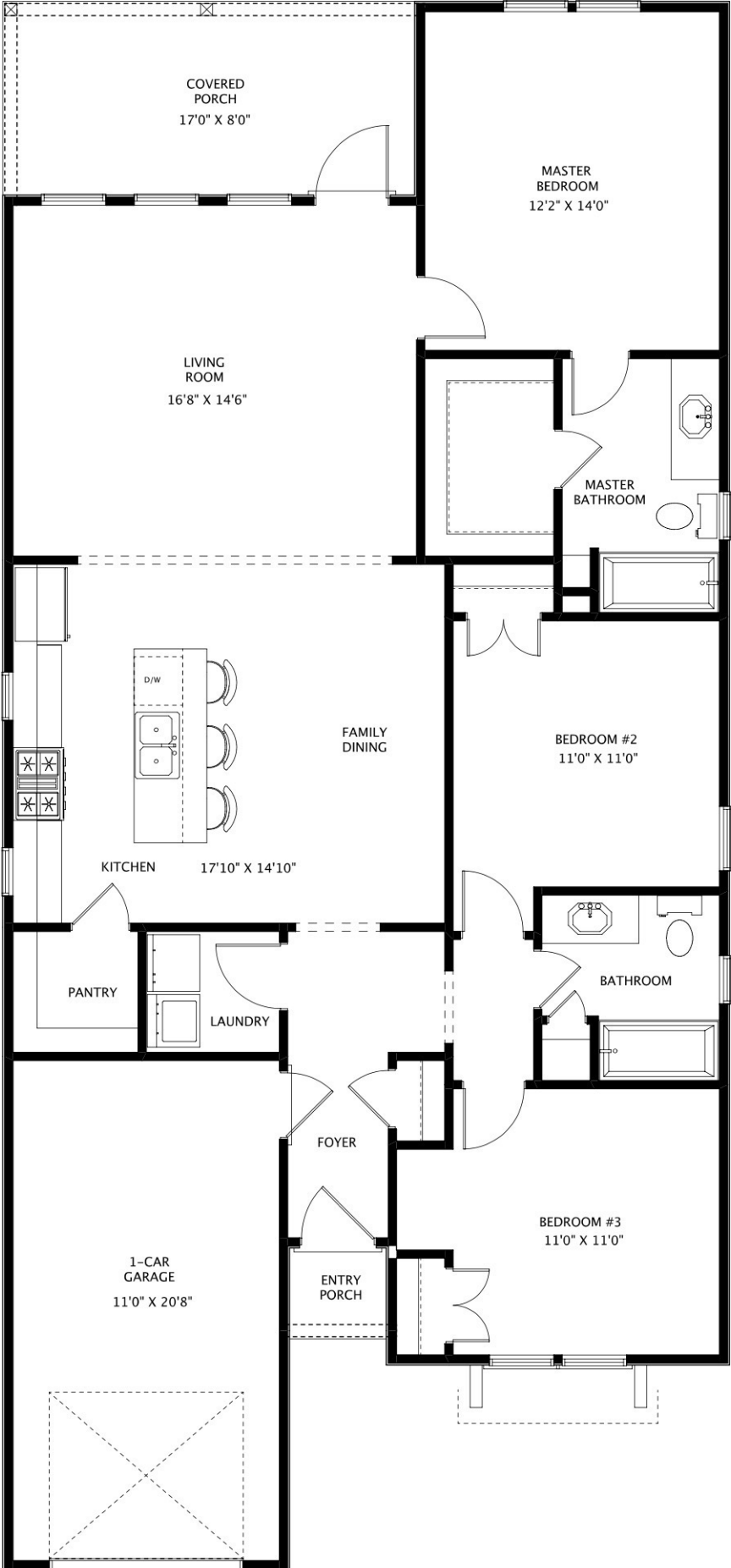
Bedrooms

- All Bedrooms will have ceiling fans

Customizing isn't complicated! Upgraded finish options are available for our standard finishes in pre-sale homes. We have all of our upgrade options, details, and pricing available for you in our Design Guide. View the link below to access it!

www.hollandhomesllc.com/process/design-guide

MAIN LEVEL



Butterfly Rock

at THE HAVEN



"Building Reputations"

www.HollandHomesllc.com

(334) 332-7157

THE ELEVATION AND FLOOR PLANS CONTAINED HEREIN ARE NOT TO SCALE AND ARE GRAPHIC ILLUSTRATIONS FOR MARKETING AND PRESENTATION PURPOSES ONLY. ACTUAL FLOOR PLANS AND ALL MATERIALS MAY VARY PRIOR TO OR DURING CONSTRUCTION. SOME FEATURES SHOWN MAY BE OPTIONAL. HOLLAND HOMES RESERVES THE RIGHT TO SUBSTITUTE MATERIALS AND COMPONENTS OF SIMILAR QUALITY, AND TO CHANGE FEATURES, OPTIONS, AND ARCHITECTURAL DETAILS WITHOUT PRIOR NOTICE. ACCORDINGLY, NEITHER THESE MATERIALS, NOR ANY COMMUNICATION MADE OR GIVEN IN CONNECTION WITH THESE MATERIALS, MAY BE DEEMED TO CONSTITUTE ANY REPRESENTATION OF WARRANTY, CONTRACT OR GUARANTEE OR MAY OTHERWISE BE RELIED UPON BY ANY PERSON OR ENTITY UNLESS CONVEYED IN WRITTEN FORM. THIS MARKETING INFORMATION AND PLAN ARE PROPERTY OF HOLLAND HOMES.