

# *The Evelyn*

EVERLEY



*The Evelyn*  
3 Bed – 2 Bath  
1415 SQFT

# The Evelyn's Standard Features

## Building Standards:

- Slab on grade concrete foundation
- Traditional stick framing methods
- Framed "Green Corners" for higher energy efficiency
- Engineered AdvanTech Sub Floor
- Eco friendly Sentricon Termite Bait Station
- Studs, ceiling joists and rafters will be 16" on center

## Exterior Features:

- Hardie Lap exterior siding
- Limited Lifetime Dimensional Architectural Roof Shingles
- Exposed rafter tails
- Single hung, double paned, high efficiency, low E glass, vinyl windows
- Fiberglass front & back doors with locking system
- Landscaping to include plant package, irrigation and 7 pallets of sod

## Interior Features:

- 9' smooth ceilings throughout
- Open cell R20 Spray Foam insulation installed on roof deck
- Traditional R13 Batt/Fiberglass insulation installed in the exterior walls (draft stopping measures to seal insulation)
- 50-gallon electric water heater
- 14.3 SEER2 electric heat pump
- Low Voltage pre-wire included. Additional smart home packages available on pre-sale homes

## Interior Finishes:

### Design Features

- 6" baseboards & cased windows throughout
- Disc lighting throughout kitchen, living room, dining room & primary bedroom
- Wire shelving installed in all closets, laundry & pantry
- Interior walls primed & painted with Sherwin Williams® Paint. Includes two wall colors, one trim color & one ceiling color
- Judges paneling in family dining room
- Mud bench at the back entryway of the home

### Flooring

- LVP flooring in the common areas, bathrooms and laundry room
- Carpet in all bedrooms, closets & any other rooms

### Kitchen

- Shaker style, custom designed, wooden cabinets in the kitchen & bathrooms
- Granite countertops throughout
- Stainless Steel appliances by Whirlpool®, including the dishwasher, glass top electric range & over the range microwave
- Chrome Delta® Kitchen Fixtures
- Stainless Steel undermount sink in the kitchen
- Tiled backsplash in the kitchen

### Bathrooms

- Large double vanities in the primary bathroom with under-mount sink
- Vanity mirrors
- High quality fiberglass tub/shower in all full bathrooms
- Chrome Delta® Bath Fixtures

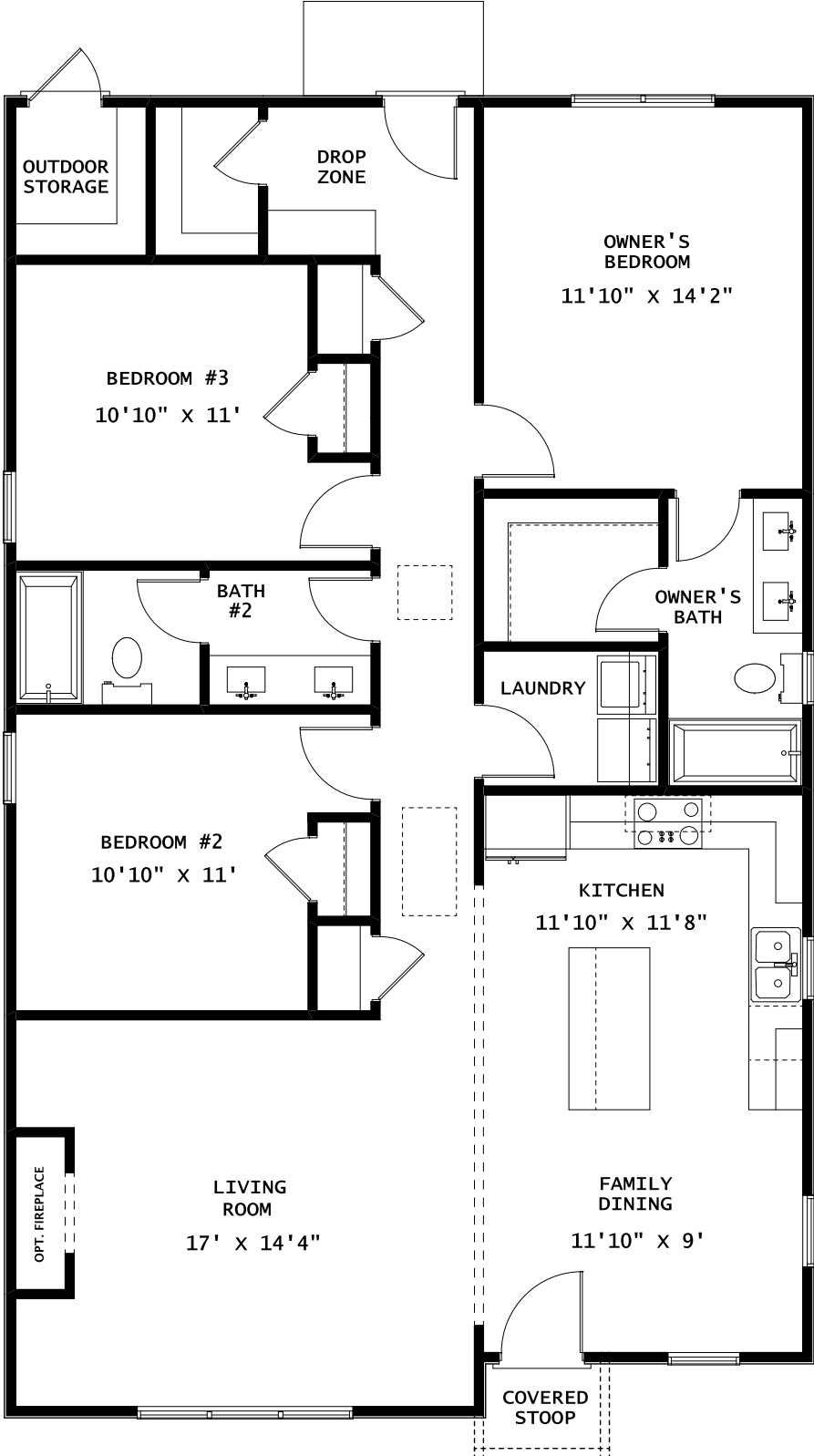
### Bedrooms

- All bedrooms will have ceiling fans

The exterior color schemes for the community have been thoughtfully selected by our Design Team. Scan the QR code to see the designated floor plan and color scheme for each lot.



**MAIN LEVEL**



# FENCING OPTIONS



Fencing available for no garage homesites at \$4,000. Fences will be a farm-style with four rails and wire mesh.



## EVERLEY



EQUAL HOUSING  
OPPORTUNITY

THE ELEVATION AND FLOOR PLANS CONTAINED HEREIN ARE NOT TO SCALE AND ARE GRAPHIC ILLUSTRATIONS FOR MARKETING AND PRESENTATION PURPOSES ONLY. ACTUAL FLOOR PLANS AND ALL MATERIALS MAY VARY PRIOR TO OR DURING CONSTRUCTION. SOME FEATURES SHOWN MAY BE OPTIONAL. HOLLAND HOMES RESERVES THE RIGHT TO SUBSTITUTE MATERIALS AND COMPONENTS OF SIMILAR QUALITY, AND TO CHANGE FEATURES, OPTIONS, AND ARCHITECTURAL DETAILS WITHOUT PRIOR NOTICE. ACCORDINGLY, NEITHER THESE MATERIALS, NOR ANY COMMUNICATION MADE OR GIVEN IN CONNECTION WITH THESE MATERIALS, MAY BE DEEMED TO CONSTITUTE ANY REPRESENTATION OF WARRANTY, CONTRACT OR GUARANTEE OR MAY OTHERWISE BE RELIED UPON BY ANY PERSON OR ENTITY UNLESS CONVEYED IN WRITTEN FORM. THIS MARKETING INFORMATION AND PLAN ARE PROPERTY OF HOLLAND HOMES.