

# The Poplar

*Legacy Plan*



The Poplar without basement

2 Bed - 2.5 Bath

1,786 sqft

**Exterior:**

- High Quality Exterior
- Low Maintenance Hardie Lap and Board & Batten
- 30-Year Dimensional Architectural Roof Shingles
- Single Hung, Double Pane High Efficiency Low E Glass Vinyl Windows
- Sodded Lot using Bermuda Grass
- Includes 10 pallets of sod & planting beds in front of home
- 10x10 Rough Sawn Columns
- Rafter Tails and T1-11 Porch Decking

**Building Standards:**

Slab on Grade Concrete Foundation  
 Traditional Stick Framing Methods  
 Framed "Green Corners" for higher Energy Efficiency

**Interior Features:**

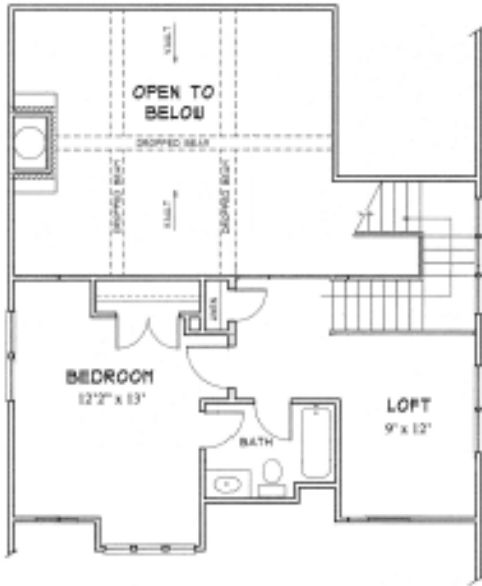
- 10' Ceilings on the first floor and 9' Ceilings on the second floor
- Traditional R13 Batt/Fiberglass Insulation
- Open Cell R20 Spray Foam Installed on Roof Deck
- High Efficiency 50 Gallon Electric Water Heater
- Energy Efficient 14 SEER Electric Heat Pump
- Prewired for a Standard Home Security System

**Interior Finishes:**

- 5" Hand Scraped Pre-Engineered Hardwood Flooring in the Common Areas on Main Floor
- Carpet in all Bedrooms
- Ceramic tile in all Full Bathrooms
- Custom Designed Wooden Cabinets in Kitchen & Bathrooms
- Granite countertops throughout
- Stainless Steel Appliances by Whirlpool®, including the Dishwasher, Glass Top Electric Range & Microwave
- Delta® Kitchen and Bath Fixtures
- Vanity Mirrors
- Schluter Shower system with Delta fixtures & full tile surround in Master Bathroom
- Soaking Garden Tub in Master Bathroom
- Recessed Lighting throughout Kitchen, Living Room, & Master Bedroom
- Low Maintenance High Quality Fiberglass Tub/ Shower in all other Full Bathrooms
- Wire Shelving installed in all Closets, Pantry, & Laundry Areas
- Interior walls primed & painted with Sherwin Williams® products. Includes two wall colors, one trim color, & one ceiling color
- 6" Baseboards throughout
- Wood Burning Fireplace
- Two options for 5' tall stone surround Fireplace, including a cedar 6x12 mantle with corbels or a Shaker Style mantle.

**Upgraded Finish Options:**

Farmhouse Sink	\$1,250
Under Cabinet Lighting	\$1,200
2" White Faux Wood Blinds throughout	\$69 per window/door
Window Screens (on all operable windows)	\$32 per window
Solid Core Doors throughout	\$1,700
Barn Door	\$500
Floor Outlet	\$500 per
USB Outlet	\$50 per
Surround Sound	\$3,250
(Includes 5 ceiling speakers, 1 sub woofer (floor standing), 5 channel audio-video receiver/amplifier & 1 Control4 entertainment controller with remote)	
Music Package	\$1,000 per room
(Includes 2 in ceiling speakers & 1 zone amp w/ wireless remote control via smart phone or tablet app, requires WiFi)	
10' Wide Gravel Driveway	\$1.85 per sq. ft.
Concrete Driveway	\$3.25 per sq. ft.
Culvert	\$1,250
Septic Tank Allowance	\$6,500
Basic Site Prep, non-wooded lots	\$2,750
Marble Countertops	Price Available Upon Request
Heated Tile Floors	Price Available Upon Request
Brick Accent Wall	Price Available Upon Request
Clearing Lot, non-wooded lots	Price Available Upon Request



Upper Level



Main Level

All Selections are to be made from the approved Legacy Collection options in the Holland Homes Showroom.

\*Sitework, Driveway, Sewer/Septic System, Lot Costs & Utilities are not included



"Building Reputations"

[www.HollandHomesllc.com](http://www.HollandHomesllc.com)

**(334) 332-7157**

THE ELEVATION AND FLOOR PLANS CONTAINED HEREIN ARE NOT TO SCALE AND ARE GRAPHIC ILLUSTRATIONS FOR MARKETING AND PRESENTATION PURPOSES ONLY. ACTUAL FLOOR PLANS AND ALL MATERIALS MAY VARY PRIOR TO OR DURING CONSTRUCTION. SOME FEATURES SHOWN MAY BE OPTIONAL. HOLLAND HOMES RESERVES THE RIGHT TO SUBSTITUTE MATERIALS AND COMPONENTS OF SIMILAR QUALITY, AND TO CHANGE FEATURES, OPTIONS, AND ARCHITECTURAL DETAILS WITHOUT PRIOR NOTICE. ACCORDINGLY, NEITHER THESE MATERIALS, NOR ANY COMMUNICATION MADE OR GIVEN IN CONNECTION WITH THESE MATERIALS, MAY BE DEEMED TO CONSTITUTE ANY REPRESENTATION OF WARRANTY, CONTRACT OR GUARANTEE OR MAY OTHERWISE BE RELIED UPON BY ANY PERSON OR ENTITY UNLESS CONVEYED IN WRITTEN FORM. THIS MARKETING INFORMATION AND PLAN ARE PROPERTY OF HOLLAND HOMES.