

The Chicken Coop

Legacy Plan



The Chicken Coop

231 sq ft

Exterior:

High Quality Exterior
 Low Maintenance Hardie Lap
 Standing Seam Metal Roof
 Exposed Rafter Tails
 Vented Vinyl Ceiling on Front Porch
 Single Hung, Double Pane High Efficiency Low E Glass
 Vinyl Windows with Half Screens on all Windows
 Low Maintenance Steel 6 Panel Front Door & Locking System
 Barn Door on Porch
 Manually Operated 8x8 Automatic Garage Door
 Cupola with Copper Roof & Rooster Weathervane on Top of Roof
 Painted or Stained Exterior with Sherwin Williams® products
 Two Goose-neck Exterior Sconces, & Two Floodlights
 \$2500 Landscaping Allowance

Building Standards:

Slab on Grade Concrete Foundation
 Traditional Stick Framing Methods
 Framed "Green Corners" for higher Energy Efficiency
 Eco Friendly Sentricon Termite Bait Station
 Studs, Ceiling Joists, and Raters will be 16" On Center

Upgraded Finish Options:

Farmhouse Sink	\$1,250
Under Cabinet Lighting	\$1,200
2" White Faux Wood Blinds throughout	\$69 per window/door
Window Screens	\$32 per window
Solid Core Doors throughout	\$1,700
Barn Door	\$500
Floor Outlet	\$500 per
USB Outlet	\$50 per
Surround Sound (Includes 5 ceiling speakers, 1 sub woofer (floor standing), 5 channel audio-video receiver/amplifier & 1 Control4 entertainment controller with remote)	\$3,250
Music Package (Includes 2 in ceiling speakers & 1 zone amp w/ wireless remote control via smart phone or tablet app, requires WiFi)	\$1,000 per room
10' Wide Gravel Driveway	\$1.85 per sq. ft.
Concrete Driveway	\$3.25 per sq. ft.
Culvert	\$1,250
Septic Tank Allowance	\$6,500
Basic Site Prep, non-wooded lots	\$2,750
Marble Countertops	Price Available Upon Request
Heated Tile Floors	Price Available Upon Request
Brick Accent Wall	Price Available Upon Request
Clearing Lot, non-wooded lots	Price Available Upon Request

Interior Features:

9' Ceilings
 Concrete Slab Floor

Interior Finishes:**Storage Room**

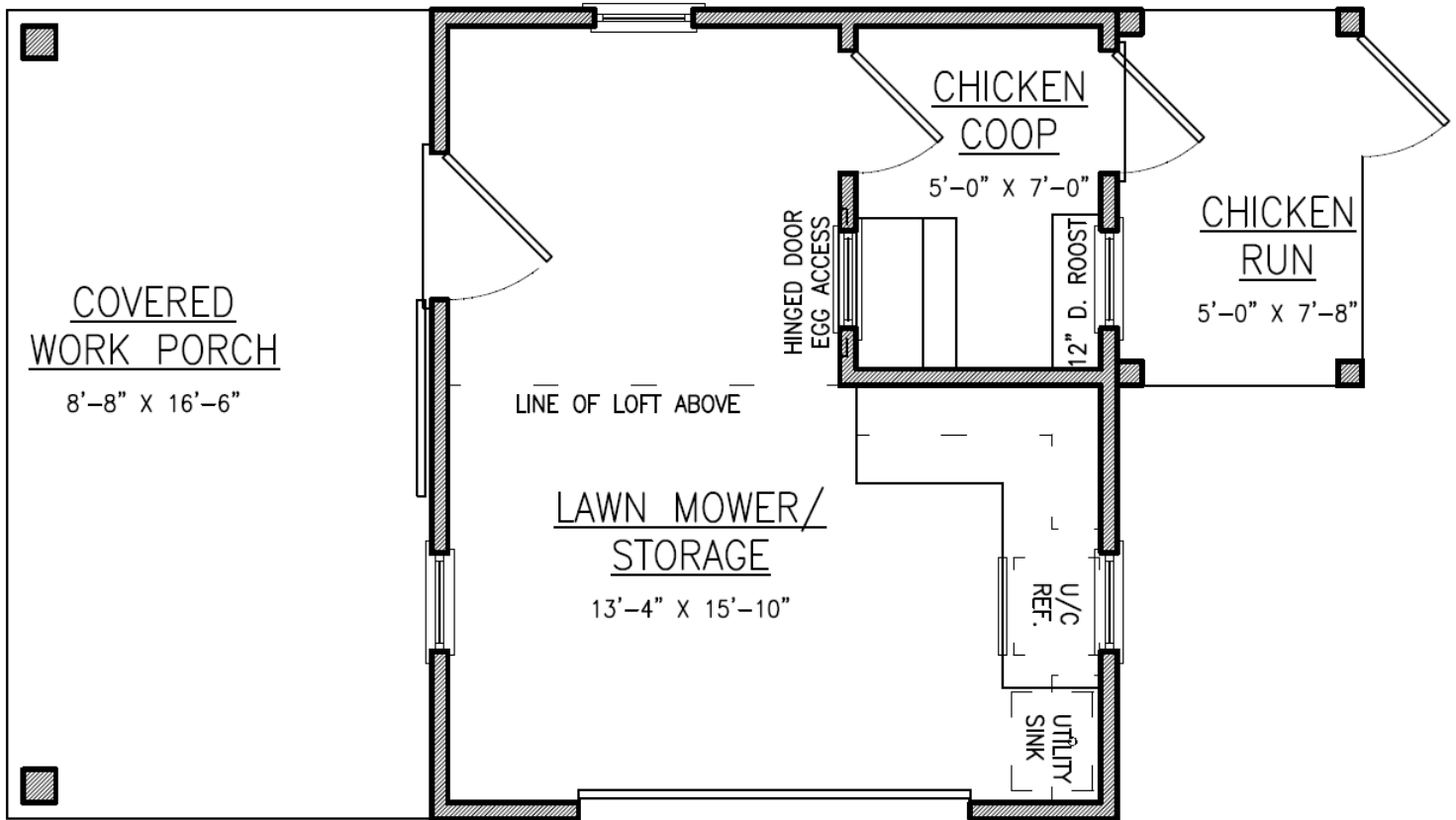
Fiberglass Freestanding Sink
 4.5 Cubic Foot Refrigerator
 Three LED Track Lights
 Plywood Work Bench with Plywood Shelving Above
 Concrete Slab Floor

Chicken Coop

Hinged Egg Access
 Roosting Shelves
 LED Track Light
 Concrete Slab Floor

Chicken Run

Screened in with Chicken Wire Buried 1 ft. in the Ground
 Pressure Treated Wood
 Screen Door



Main Level

All Selections are to be made from the approved Legacy Collection options in the Holland Homes Showroom.

*Sitework, Driveway, Sewer/Septic System, Lot Costs & Utilities are not included



THE ELEVATION AND FLOOR PLANS CONTAINED HEREIN ARE NOT TO SCALE AND ARE GRAPHIC ILLUSTRATIONS FOR MARKETING AND PRESENTATION PURPOSES ONLY. ACTUAL FLOOR PLANS AND ALL MATERIALS MAY VARY PRIOR TO OR DURING CONSTRUCTION. SOME FEATURES SHOWN MAY BE OPTIONAL. HOLLAND HOMES RESERVES THE RIGHT TO SUBSTITUTE MATERIALS AND COMPONENTS OF SIMILAR QUALITY, AND TO CHANGE FEATURES, OPTIONS, AND ARCHITECTURAL DETAILS WITHOUT PRIOR NOTICE. ACCORDINGLY, NEITHER THESE MATERIALS, NOR ANY COMMUNICATION MADE OR GIVEN IN CONNECTION WITH THESE MATERIALS, MAY BE DEEMED TO CONSTITUTE ANY REPRESENTATION OF WARRANTY, CONTRACT OR GUARANTEE OR MAY OTHERWISE BE RELIED UPON BY ANY PERSON OR ENTITY UNLESS CONVEYED IN WRITTEN FORM. THIS MARKETING INFORMATION AND PLAN ARE PROPERTY OF HOLLAND HOMES.